

User Manual

I-NA212-J

SATA to USB2.0 External Storage System
2.5" HDD JBOD Subsystem



Getting Started

Thank you for purchase ineo | I-NA212-J product. ineo | I-NA212-J SATA to USB2.0 external storage system. This user manual provides step-by-step installation instructions and other important information regarding your ineo product. For the latest ineo product information and news, please visit our Web Site at <http://www.neo2tech.com>

Package Contents

I-NA212-J	SATA HDD to USB2.0
CD	Yes
USB Cable	Yes
User Manual	Yes
Power Adapter	Yes



System Requirements

Hardware

Pentium® II, 200 MHz equivalent or newer for IBM compatible PC
PowerPC G4, 350 MHz or newer for PowerPC-based Apple Computer Core® or newer for Intel-based Apple Computer

Software

Windows 98SE / 2000/ 2003 / XP / Vista / 7
Mac® OS X v.10.2+

Note: For highest performance and reliability, ineo recommends that you install the latest service pack (SP) and updates.

Updating Your Operating System

Windows

Go to the Start menu and select Windows updates. For more information regarding updating your system, visit <http://windowsupdate.microsoft.com>.

Macintosh

Go to the Apple menu and select Software Update. For more information regarding updating your system, visit <http://www.apple.com/macosx>.

Handling Precautions

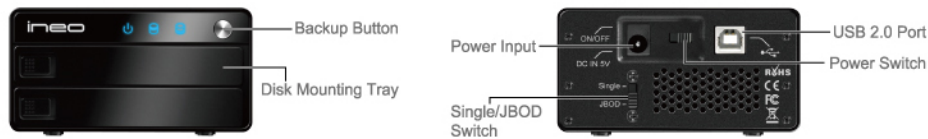
ineo products are precision instruments and must be handled with care during unpacking and installation. Drives may be damaged by rough handling, shock, or vibration. Be aware of the following precautions when unpacking your ineo external storage kit:

- Do not unpack the product until you are ready to install it.
- Do not drop or jolt the product.
- Do not move the external storage when it is powered up.

Setting Up

You will need a 2.5 inch SATA Hard Disk Drive in 9.5 mm height. Carefully follow the procedure to install the Hard Disk Drive into the external storage system.

ineo | I-NA212-J Front & Rear View



Power Input: Connects to the AC/DC power adapter.

USB 2.0 Port: Connects to a computer USB port or USB hub

Power Switch: Turns power on / off

Backup Button: Backup data from PC to enclosure

Single/JBOD Switch:

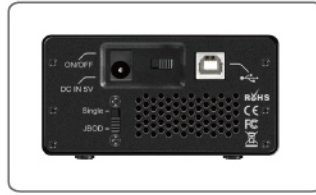
Switch between Single and JBOD mode. Please note that before you switch to another mode, backup your data first to prevent data lost.

Attention:

ineo Tech Computers, Inc. is not responsible for consequential damages, including loss or recovery of data from your hard drive. If you are installing with a hard drive that has data inside, we suggest you backup your data before processed to installation process.

Hard Disk Drive Installation

1. Please choose Single mode or JBOD mode from Single/JBOD switch.



2. By turning the switches to open the disk mounting trays.



3. Slice two SATA hard disk drives into disk mounting trays.



4. Push the SATA Hard Disk Drives back into the disk mounting trays, and close the doors. The hard disk drive installation is completed.



Connecting the External Storage System

Connecting the Cables



Attention:

Please make sure the power switch is OFF before you connect the AC power adapter.

- Connect the Power Adapter to DC IN.
- Connect one end of the USB 2.0 cable to the USB 2.0 port at the rear of the external Hard Disk Drive.
- Connect the other end of the USB 2.0 cable to an available USB 2.0 port on your computer.

Powering Up the Drive

Switch the power switch to turn on the unit. Wait 3 seconds after blue light illuminates.

Windows 2000 / 2003 / XP / Vista / 7

Your operating system will automatically detect the external drive after a "Found New Hardware" message pops up.

Windows 98SE

Note: ineo does not provide any tech supports for Windows98 platform since Microsoft has discontinued Windows 98SE.

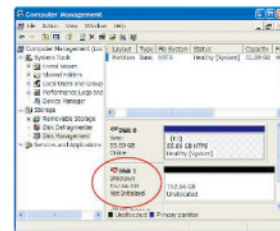
Mac OS X

Your operating system will automatically detect the external drive. Once formatted the Hard Disk Drive, the Hard Disk Drive icon will appear on the desktop.

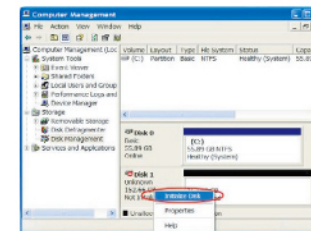
Partition & Format the Hard Disk Drive

Windows 2000/ 2003 / XP / Vista / 7

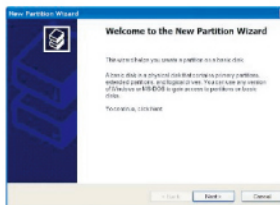
1. Click the **Start** button and click on **Control Panel**, double-click the **Administrative Tools**, and then double-click the **Computer Management**.



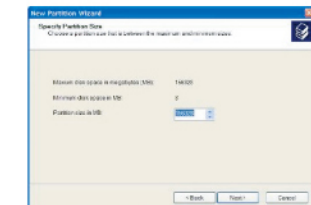
2. Click the **Disk Management** under **Storage**. Your new Hard Disk Drive should have the right capacity shown. (E.g. figure above **Disk 1** is showing approximately 160GB). Right click the **Disk 1**, and choose **Initialize Disk**.



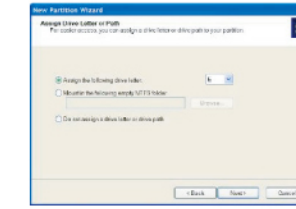
3. After **New Partition Wizard** launched, then click **Next**.



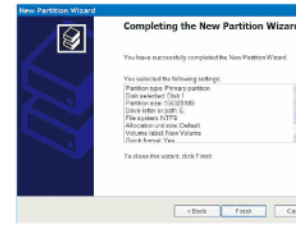
4. On the next page, choose your partition size then click **Next**.



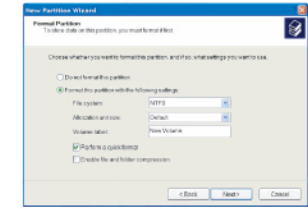
5. After that, please assign a drive letter for the new Hard Disk Drive, and go to **Next**.



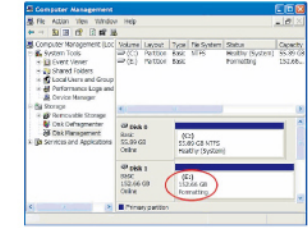
7. Confirm your setting and click **Finish**.



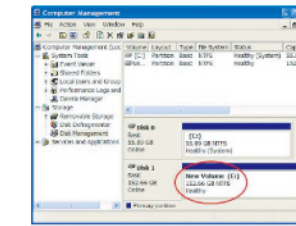
6. To format a Hard Disk Drive. Choose the **NTFS** as **File System**. Leave the **Allocation unit size** as default. Assign a name in **Volume label**. Check the **Perform a quick format** to reduce format time. Click **Next**.



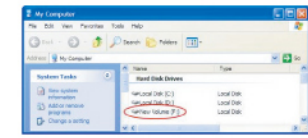
8. It would show the status as **Formatting**.



9. When the status change to **Healthy**, your new Hard Disk Drive is ready for use.



10. Go to **My Computer**, your new drive should be listed there and ready for use.



Mac OS X

Note: If the **warning** does not show up, start at step 2.

1. A warning window will pop up for new and unformatted Hard Disk Drive. Click **Initialize**. Skip Step 2 and continue at Step 3.



2. Click **Go** on the desk bar and choose **Utilities**, click **Disk Utility**.



3. Under the **Disk Utilities**, choose the new Hard Disk Drive (1) and click **Partition** (2). Click **Options** to choose format other than **Mac Extended** (3) refer to **Figure 1**. Choose the number of partition you want by clicking on the scroll bar (4) Name the new Hard Disk Drive (5) Choose the **Format** (6) refer to **Figure 2**. Define the **Size** if you want more than one partition or else, leave it as default (7). Make sure the configuration is right and click **Partition** (8).

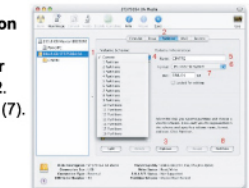


Figure 1: Three Options: Choose the partition for your hard disk drive, then click **OK**.



Figure 2: Six Formats: Choose the format for your Hard Disk Drive.

- Mac OS Extended (Journaled)
- Mac OS Extended
- Mac OS Extended (Case-sensitive, Journaled)
- Mac OS Extended (Case-sensitive)
- MS-DOS File System
- LINUX File System
- Free Space

4. After the partitioning is done, an icon with the **Name** you assigned should appear on your Desktop. Just double click the icon to access the Hard Disk Drive.

