

# User Manual

## I-NA214U Plus SATA to USB3.0 External Enclosure System

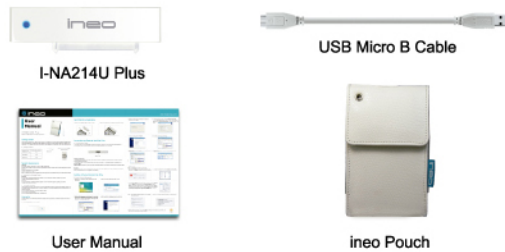


### Getting Started

Thank you for purchase ineo | I-NA214U Plus product. ineo | I-NA214U Plus SATA to USB3.0 External Enclosure System. This quick install guide provides step-by-step installation instructions and other important information regarding your ineo product. For the latest ineo product information and news, please visit our Web Site at <http://www.ineotechusa.com>

#### Package Contents

I-NA214U Plus	SATA HDD to USB 3.0
USB Micro B Cable	Yes
User Manual	Yes
ineo Pouch	Yes



### System Requirements

**Hardware**  
Pentium® II, 200 MHz equivalent or newer for IBM compatible PC  
PowerPC G4, 350 MHz or newer for PowerPC-based Apple Computer Core® or newer for Intel-based Apple Computer

**Software**  
Windows 2000/Mac9.1/Linux for USB2.0  
Windows XP/Vista/7 for USB 3.0  
Note: For highest performance and reliability, ineo recommends that you install the latest service pack (SP) and updates.

#### Updating Your Operating System

**Windows**  
Go to the Start menu and select Windows updates. For more information regarding updating your system, visit <http://windowsupdate.microsoft.com>.

**Macintosh**  
Go to the Apple menu and select Software Update. For more information regarding updating your system, visit <http://www.apple.com/macosex>.

#### Handling Precautions

ineo products are precision instruments and must be handled with care during unpacking and installation. Drives may be damaged by rough handling, shock, or vibration. Be aware of the following precautions when unpacking your ineo external storage kit:

- Do not unpack the product until you are ready to install it.
- Do not drop or jolt the product.
- Do not move the external storage when it is powered up.

### Setting Up

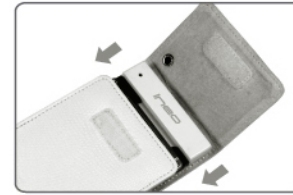
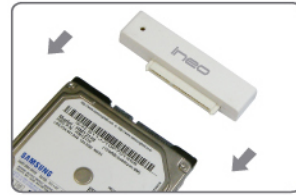
You will need a 2.5 inch SATA Hard Disk Drive. Carefully follow the procedure to install the Hard Disk Drive into the enclosure.

#### ineo | I-NA214U Plus Front View



### Hard Disk Drive Installation

- Please connect SATA HDD to SATA connector.
- Place SATA HDD with connector into pouch.



- Close the pouch cover and connect the USB 3.0 cable.
- The USB 3.0 cable can be placed at the rear of the pouch.



### Connecting the External Hard Disk Drive

#### Connecting the Cables

- Connect one end of the USB 3.0 Micro B cable to the USB 3.0 port.
- Connect the other end of the USB 3.0 cable to an available USB port on your computer.



#### Powering Up the Drive

The power is automatically startup after USB Cable is connected. Please wait 3 seconds after blue light illuminates.

#### Windows 2000/2003/XP/Vista/7

Your operating system will automatically detect the external drive after a "Found New Hardware" message pop up.

#### Windows 98SE

Note: ineo does not provide any tech supports for Windows98 platform since Microsoft has discontinued Windows 98SE.

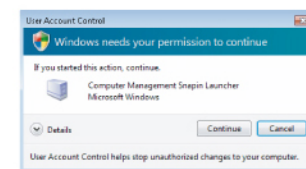
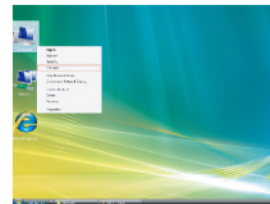
#### Mac OS X

Your operating system will automatically detect the external drive under USB2.0 mode. Once formatted the Hard Disk Drive, the Hard Disk Drive icon will appear on the desktop.

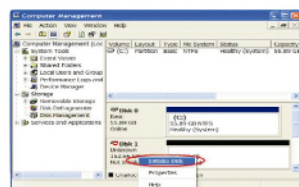
### Partition & Format the Hard Disk Drive

#### Startup Computer Management

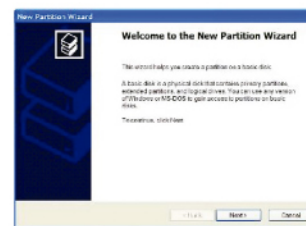
- Right click on computer and select "Manage" from drop down menu.
- Click on "Continue" button from pups up menu.



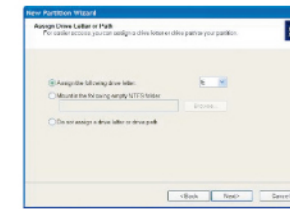
- Click the Disk Management under Storage. Your new Hard Disk Drive should have the right capacity shown. (E.g. figure above Disk 1 is showing approximately 160GB). Right click the Disk 1, and choose Initialize Disk.



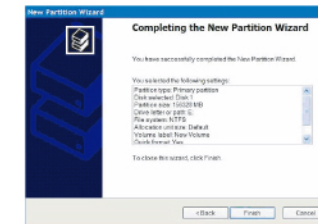
- After New Partition Wizard launched, then click Next.



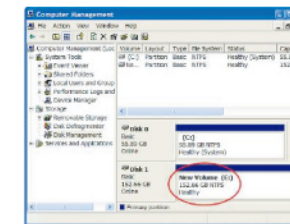
- After that, please assign a drive letter for the new Hard Disk Drive, and go to Next.



- Confirm your setting and click Finish.



- When the status change to **Healthy**, your new Hard Disk Drive is ready for use.



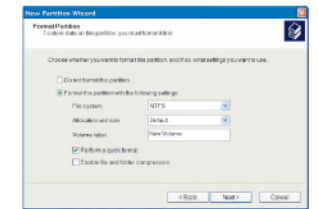
#### Mac OS X

**Note:** If the warning does not show up, start at step 2.

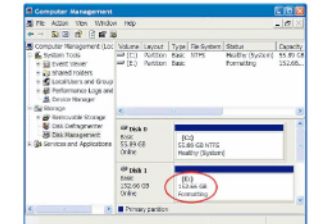
- A warning window will pop up for new and unformatted Hard Disk Drive. Click **Initialize**. Skip Step 2 and continue at Step 3.



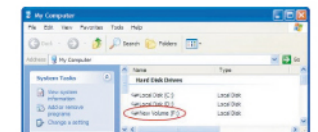
- To format a Hard Disk Drive. Choose the **NTFS** as File System. Leave the **Allocation unit size** as default. Assign a name in **Volume label**. Check the **Perform a quick format** to reduce format time. Click **Next**.



- It would show the status as **Formatting**.



- Go to My Computer, your new drive should be listed there and ready for use.



- Under the **Disk Utilities**, choose the new Hard Disk Drive (1) and click **Partition** (2). Click **Options** to choose format other than **Mac Extended** (3) refer to **Figure 1**. Choose the number of partition you want by clicking on the scroll bar (4). Name the new Hard Disk Drive (5). Choose the **Format** (6) refer to **Figure 2**. Define the Size if you want more than one partition or else, leave it as default (7). Make sure the configuration is right and click **Partition** (8).

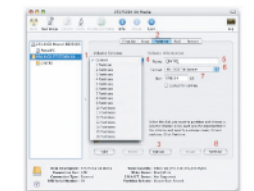
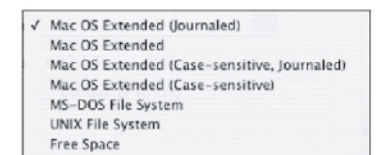


Figure 1: Three Options: Choose the partition for your hard disk drive, then click **OK**.



Figure 2: Six Formats: Choose the format for your Hard Disk Drive.



- After the partitioning is done, an icon with the **Name** you assigned should appear on your Desktop. Just double click the icon to access the Hard Disk Drive.

