

User Manual

I-NA215U Plus

SATA to USB3.0 External Storage System



Getting Started

Thank you for purchasing I-NA215U Plus SATA to USB3.0 External Storage System. This user manual provides step-by-step installation instructions and other important information regarding your ineo product. For the latest ineo product information and news, please visit our Web Site at www.ineotechusa.com

Package Contents

I-NA215U Plus	SATA to USB3.0
User Manual	Yes
USB 3.0 Cable	Yes
Screwdriver	Yes



System Requirements

Hardware

Pentium® II, 200 MHz equivalent or newer for IBM compatible PC
PowerPC G4, 350 MHz or newer for PowerPC-based Apple Computer Core® or newer for Intel-based Apple Computer

Software

Windows 2000 / Mac9.1 / Linux for USB2.0
Windows XP / Vista / 7 for USB 3.0

Note: For highest performance and reliability, ineo recommends that you install the latest service pack (SP) and updates.

Updating Your Operating System

Windows

Go to the Start menu and select Windows updates. For more information regarding updating your system, visit <http://windowsupdate.microsoft.com>.

Macintosh

Go to the Apple menu and select Software Update. For more information regarding updating your system, visit <http://www.apple.com/macosx>.

Handling Precautions

ineo products are precision instruments and must be handled with care during unpacking and installation. Drives may be damaged by rough handling, shock, or vibration. Be aware of the following precautions when unpacking your ineo external storage kit:

- Do not unpack the product until you are ready to install it.
- Do not drop or jolt the product.
- Do not move the external storage when it is powered up.

Setting Up

ineo | I-NA215U Plus Front View



Hard Disk Drive Installation

You will need a 2.5 inch SATA Hard Disk Drive. Carefully follow the procedure to install the Hard Disk Drive into the enclosure.

1. Please remove four screws from the bottom side of the lid. Separate the lid with casing to prepare Hard Disk Drive installation.



2. Connect the SATA Hard Disk Drive with SATA connector.



3. Join the lid with casing and tighten up four screws.



4. External Hard Disk Drive Installation Process Completed!



Connecting the External Hard Disk Drive

Connecting the Cables

1. Connect one end of the USB3.0 cable to the USB3.0 port at the rear of the external Hard Disk Drive.
2. Connect the other end of the USB3.0 cable to an available USB3.0 port on your computer.



Windows 2000 / 2003 / XP / Vista / 7

Your operating system will automatically detect the external drive after a "Found New Hardware" message pops up.

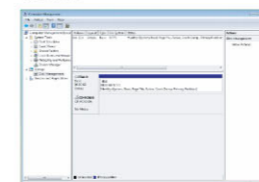
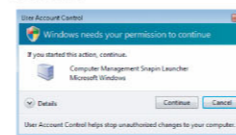
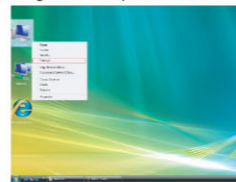
Mac OS X

Your operating system will automatically detect the external drive. Once formatted the Hard Disk Drive, the Hard Disk Drive icon will appear on the desktop.

Partition & Format the Hard Disk Drive

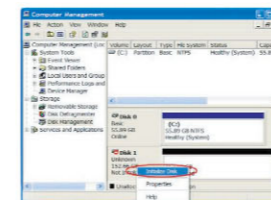
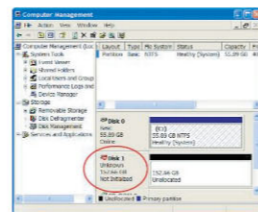
Startup Computer Management from Windows Vista / 7

1. Right click on computer and select Manage from drop down menu.
2. Click on "Continue" button from pop up menu.
3. The Computer Management is ready for use.

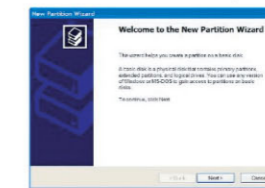


Windows XP / 2000 / 2003

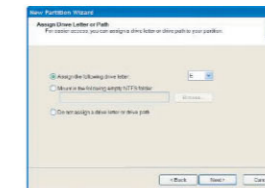
1. Click the Start button and choose Setting, and click on Control Panel. Double-click the Administrative Tools, and then double-click the Computer Management.
2. Click the Disk Management under Storage. Your new Hard Disk Drive should have the right capacity shown (e.g. figure above Disk 1 is showing approximately 160GB). Right click the Disk 1, and choose Initialize Disk.



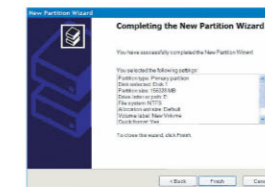
3. After New Partition Wizard launched, then click Next.



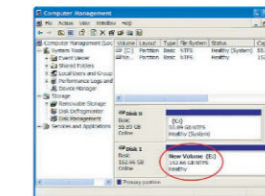
5. After that, please assign a drive letter for the new Hard Disk Drive, and go to Next.



7. Confirm your setting and click Finish.



9. When the status change to Healthy, your new Hard Disk Drive is ready to use.



Mac OS X

Note: If the warning does not show up, start at step 2.

1. A warning window will pop up for new and unformatted Hard Disk Drive. Click **Initialize**. Skip Step 2 and continue at Step 3.
2. Click **Go** on the desk bar and choose **Utilities**, click **Disk Utility**.

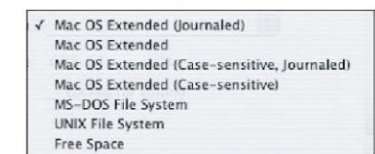


3. Under the **Disk Utilities**, choose the new Hard Disk Drive (1) and click **Partition** (2). Click **Options** to choose format other than **Mac Extended** (3) refer to **Figure 1**. Choose the number of partition you want by clicking on the scroll bar (4) Name the new Hard Disk Drive (5) Choose the **Format** (6) refer to **Figure 2**. Define the Size if you want more than one partition or else, leave it as default (7). Make sure the configuration is right and click **Partition** (8).

Figure 1: Three Options: Choose the partition for your hard disk drive, then click **OK**.



Figure 2: Six Formats: Choose the format for your Hard Disk Drive.



4. After the partitioning is done, an icon with the **Name** you assigned should appear on your Desktop. Just double click the icon to access the Hard Disk Drive.

